



## SPECIFICATIONS

**STRUCTURE:** Earthquake resistant RCC framed structure filled with brick wall.

**WALL FINISH: INTERNAL** - All internal walls ceilings with distemper over a coat of P.O.P. with decorative cornice and moulding in all dining and drawing space.

**EXTERNAL** - Plastered and painted with cement based paint

**FLOORING:** Vitrified tiles

**TOILETS:**

**WALLS** - Ceramic tiles up to 7'0" on walls.

**FITTINGS** - Ceramic wash basin, European WC in master bathroom, Indian WC in common bathroom, PVC cisterns all white in colour. Hot & cold water system (Pipe line only) fr Shower & Bib Cock only with C.P. Fittings.

**FLOORING** - Ceramic Tiles

**KITCHEN:**

**WALLS** - 2' high glazed tiles dado over platform.

**PLATFORM** - RCC working platform with granite top and steel sink of size 24'X18'X 7" fitted with Steel sink waste & C.P. Bib Cock.

**FLOORING** - Ceramic Tiles.

**WINDOW:** Fully glazed UPVC Windows.

**DOORS:** 32 mm thick Flush door and two coats of enamel paint fitted with steel Hinges & Brass Fittings like Handle, T-Bolt & L-Drop of different sizes.

**ELECTRICAL:** Electrical wiring copper in concealed conduits with provisions for lights, fans and power plugs and one TV Telephone outlets, molded plastic switches and sockets, fans and fixtures not included.

**PLUMBING:** Concealed P.P.R pipes in internal areas All P.P.R pipe fitting of standard quality PVC waste/soil/rain water pipes, RCC Hume sewerage pipes and accessories.

## SERVICE & AMENITIES

**Water:** Round the clock water supply

**Electricity:** Power supply from BSEB

**Emergency Power:** Stand by generator for water supply common lighting and 300 watts in each flat

**Lift:** One lift for all floor.

**Security:** Intercom based security system for 24 hours.

**Telecommunication:** One telephone point without connection and intercom point with connection to each flat.

**Television:** One TV point in each flat.

**Management Area** : Space for reception caretaker and common toilet.

Architect :  
A.R. Associates  
Kailash Nivas, Bhikhna Pahari,  
Patna - 800 004  
Tel. : 9431015929, 0612-3297059

APPROVED BY : PATNA METROPOLITAN AREA AUTHORITY

# GRIH APARTMENT

At Dariyapur, Khairatarli Sadani Chak  
Patna - 804453

SPECIOUS  
2/3 BHK  
DELUXE FLATS



## Medha Buildcon

Builder | Developer | Planner | Consultants

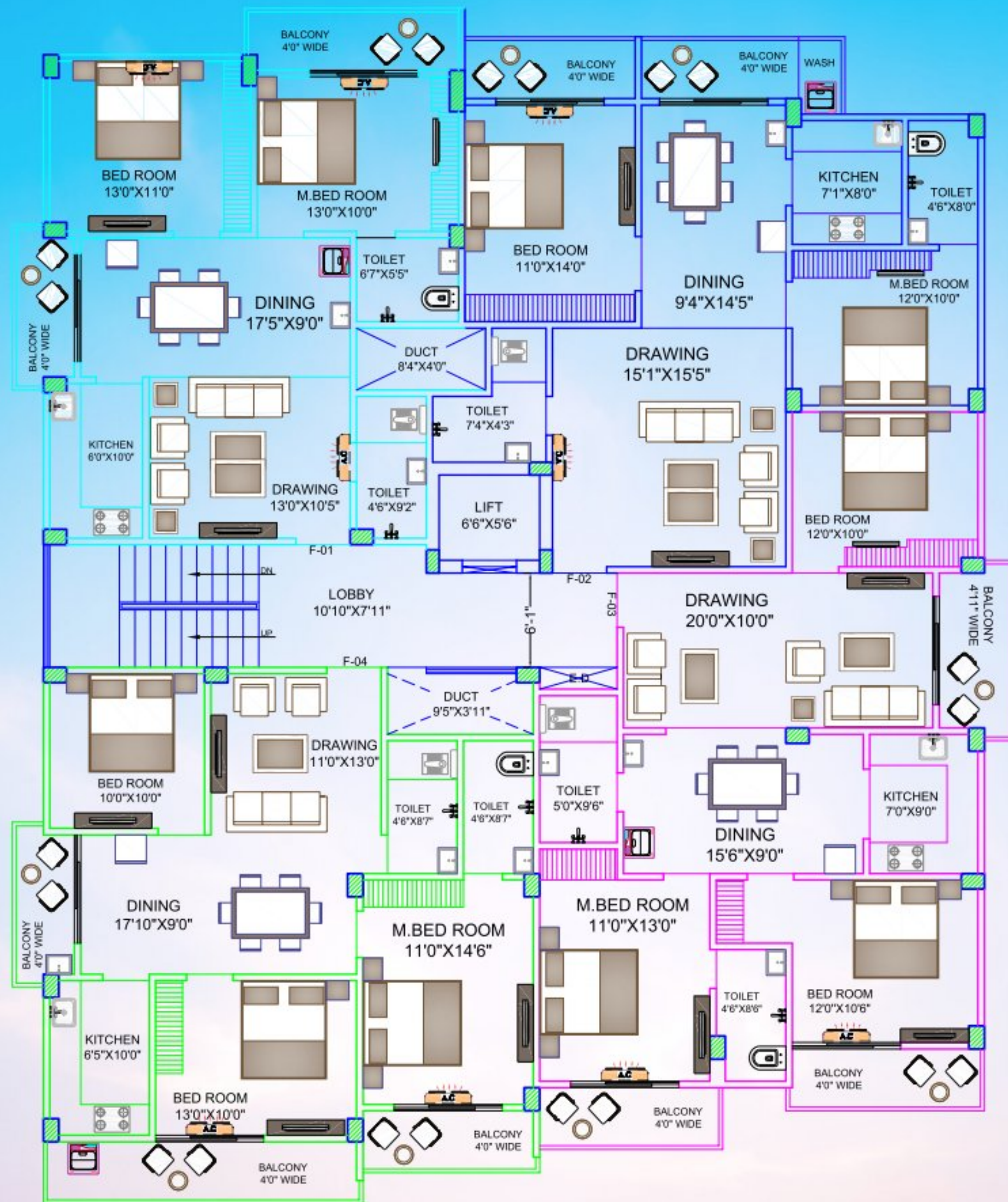
**Patna Office :**

Gr-1A, Shambhavi Enclave, Aamrath, Bhoothnath Road  
P.O-B.H.colony PATNA-26 Bihar | Mob : 94310 73936

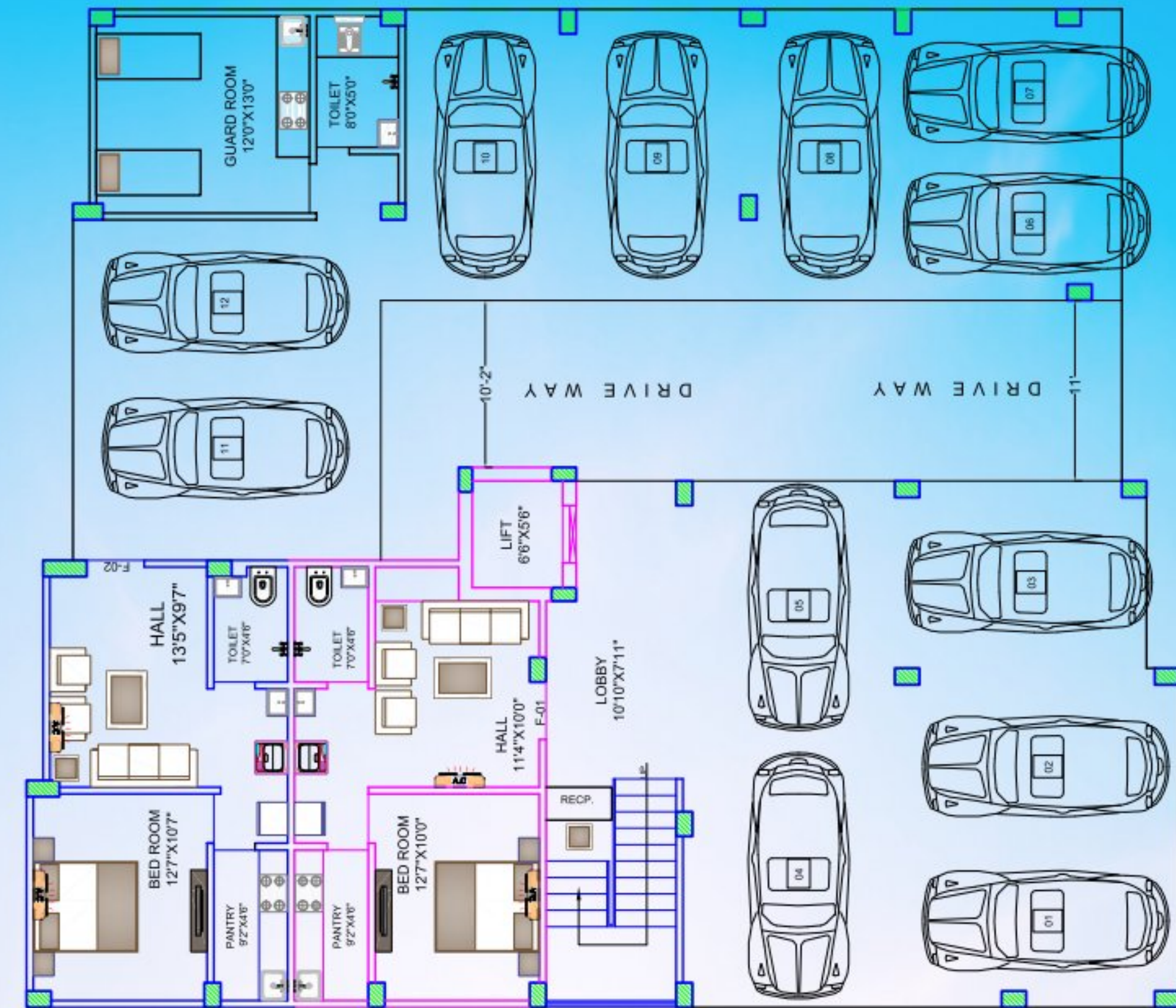
**Ranchi Office :**

5th Floor, Anirudh Complex, Jail More to Karamtoli Road, Ranchi - 834 001  
Mob : 94310 73936





| S.No.   | DESCRIPTION | BUILT-UP-AREA | S. BUILT-UP-AREA |
|---------|-------------|---------------|------------------|
| FLAT 01 | 2BHK FLAT   | 875.00 SQFT.  | 1140.00 SQFT.    |
| FLAT 02 | 2BHK FLAT   | 962.00 SQFT.  | 1250.00 SQFT.    |
| FLAT 03 | 3BHK FLAT   | 1150.00 SQFT. | 1495.00 SQFT.    |
| FLAT 04 | 3BHK FLAT   | 1068.00 SQFT. | 1390.00 SQFT.    |



| S.No.        | F-01        | F-02        |
|--------------|-------------|-------------|
| DESCRIPTION  | 1BHK FLAT   | 1BHK FLAT   |
| CARPET AREA  | 391.00 SQFT | 400.00 SQFT |
| OUTER WALL   | 24.00 SQFT  | 30.00 SQFT  |
| BALCONY AREA |             |             |
| SERVICE AREA | 125.00 SQFT | 130.00 SQFT |
| TOTAL AREA   | 540.00 SQFT | 560.00 SQFT |

