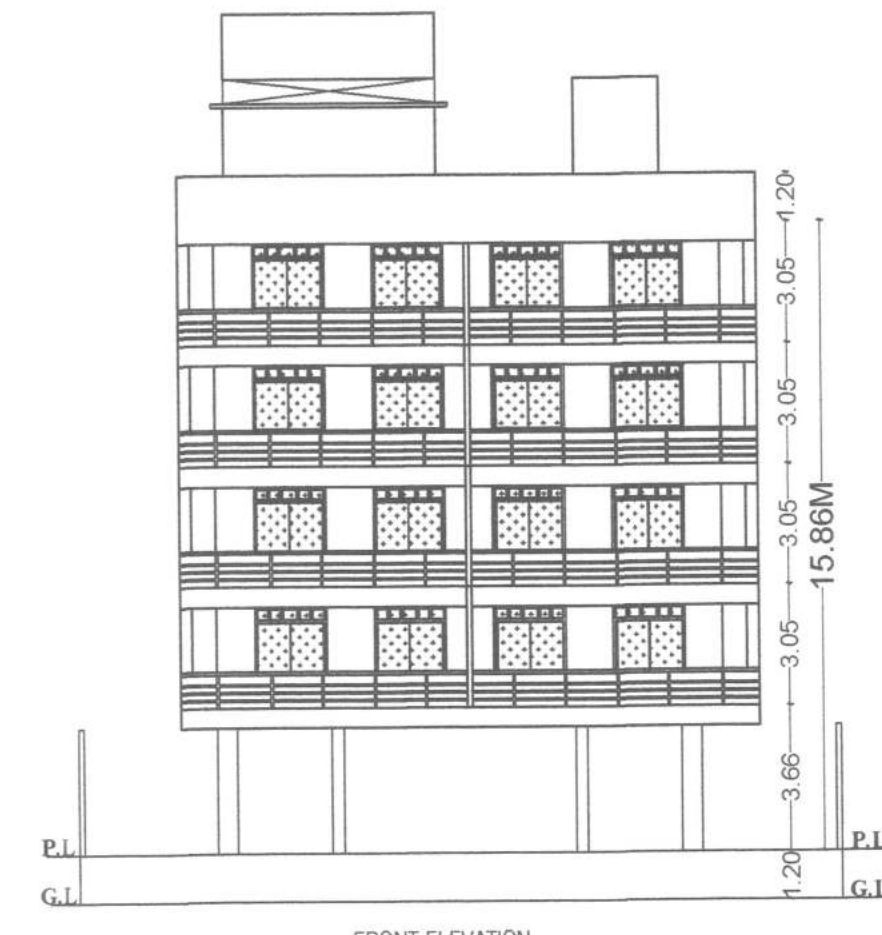


FRONT ELEVATION
BLOCK - A



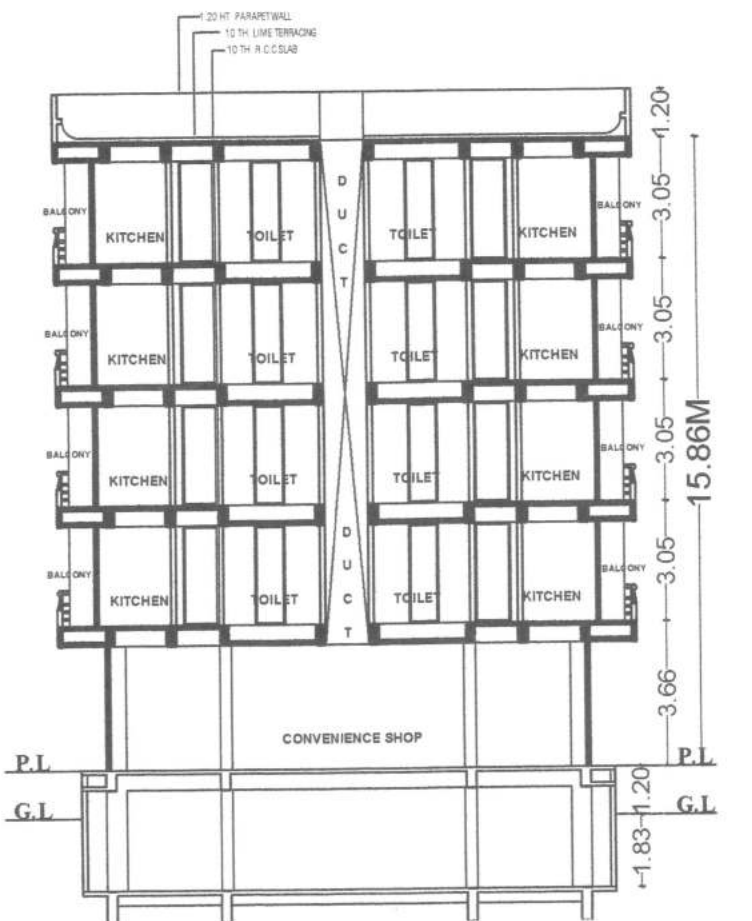
SOUTH SIDE ELEVATION
BLOCK-A



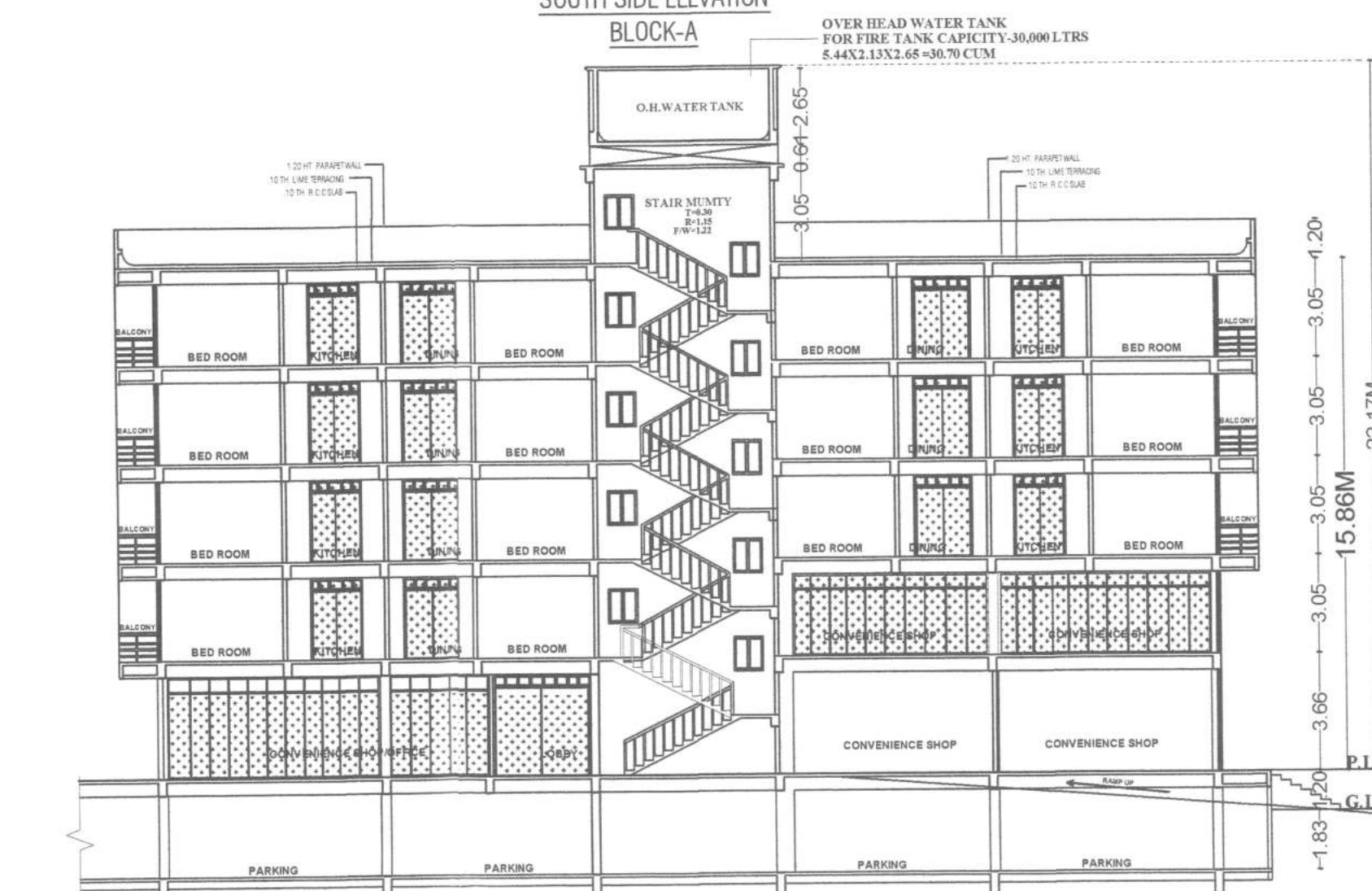
FRONT ELEVATION
BLOCK - B



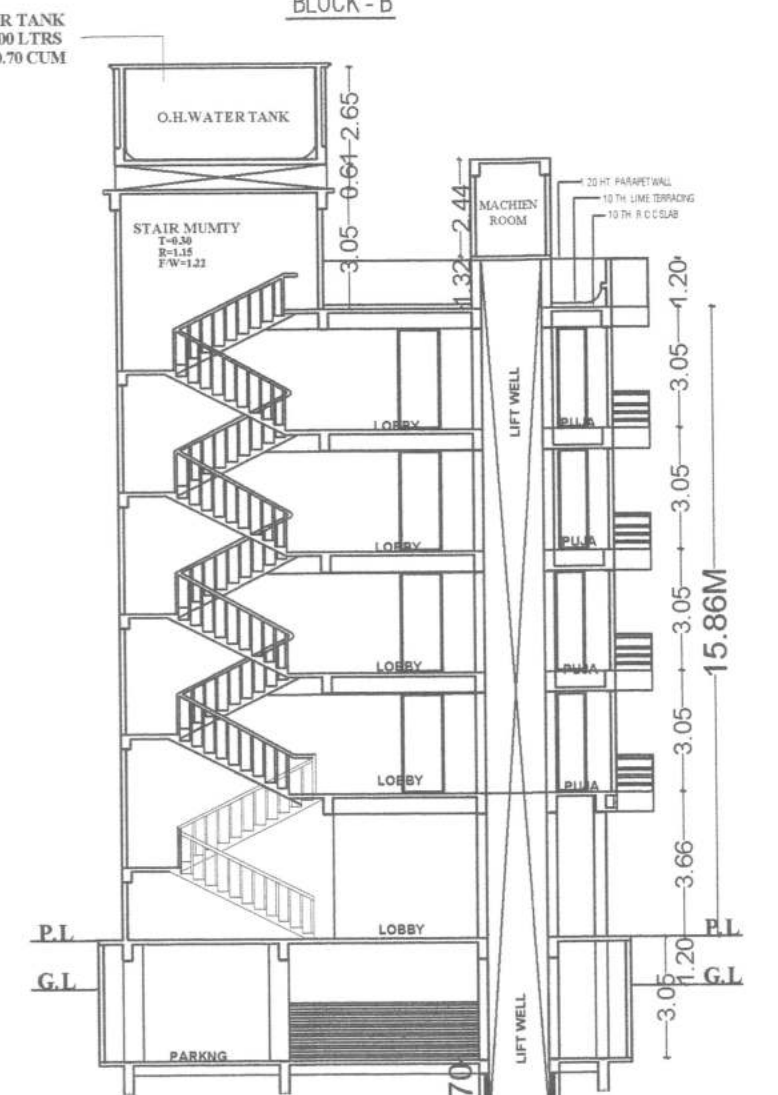
SOUTH SIDE ELEVATION
BLOCK-B



SECTION AT X-X
BLOCK - A



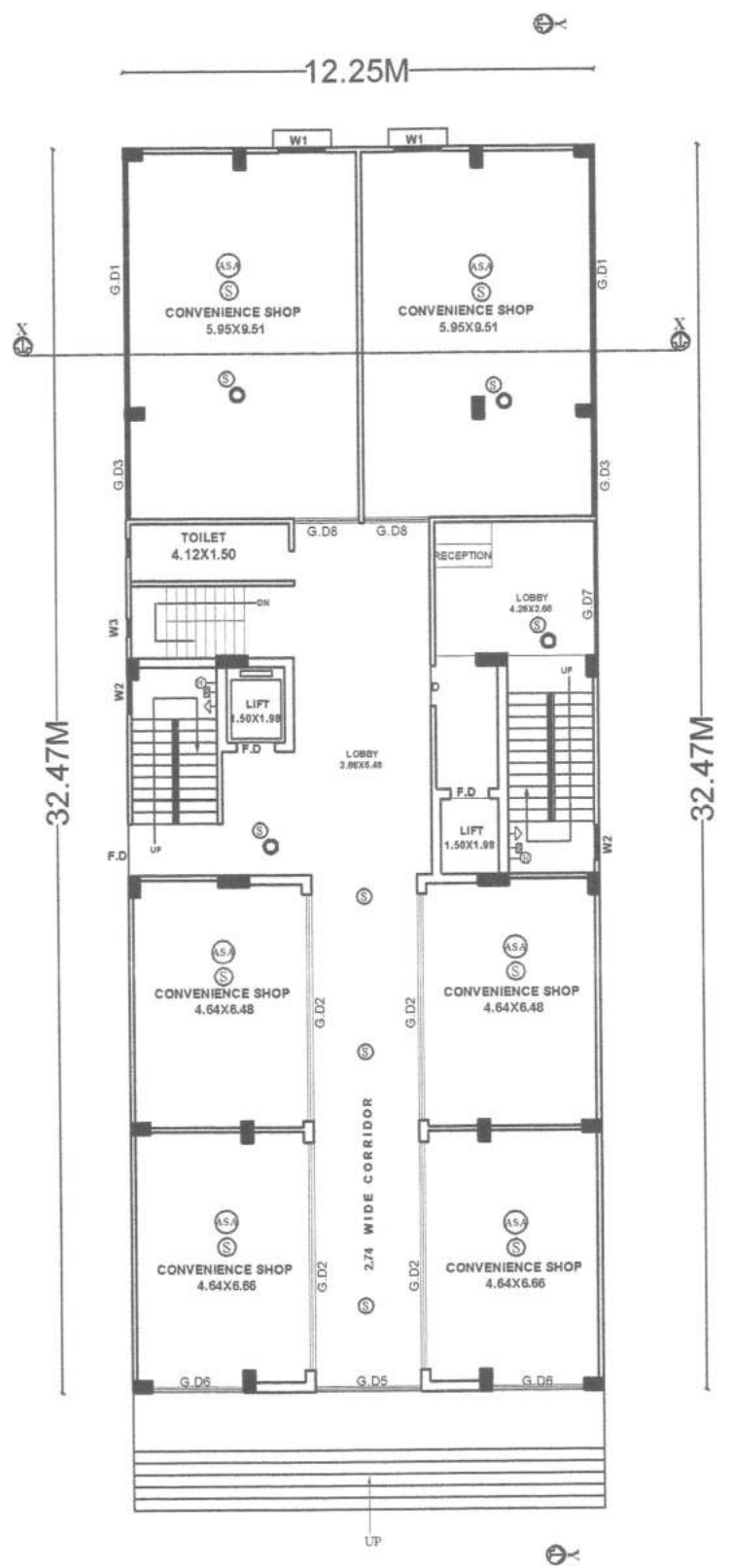
SECTION AT Y-Y
BLOCK - A



SECTION AT X-X
BLOCK - B

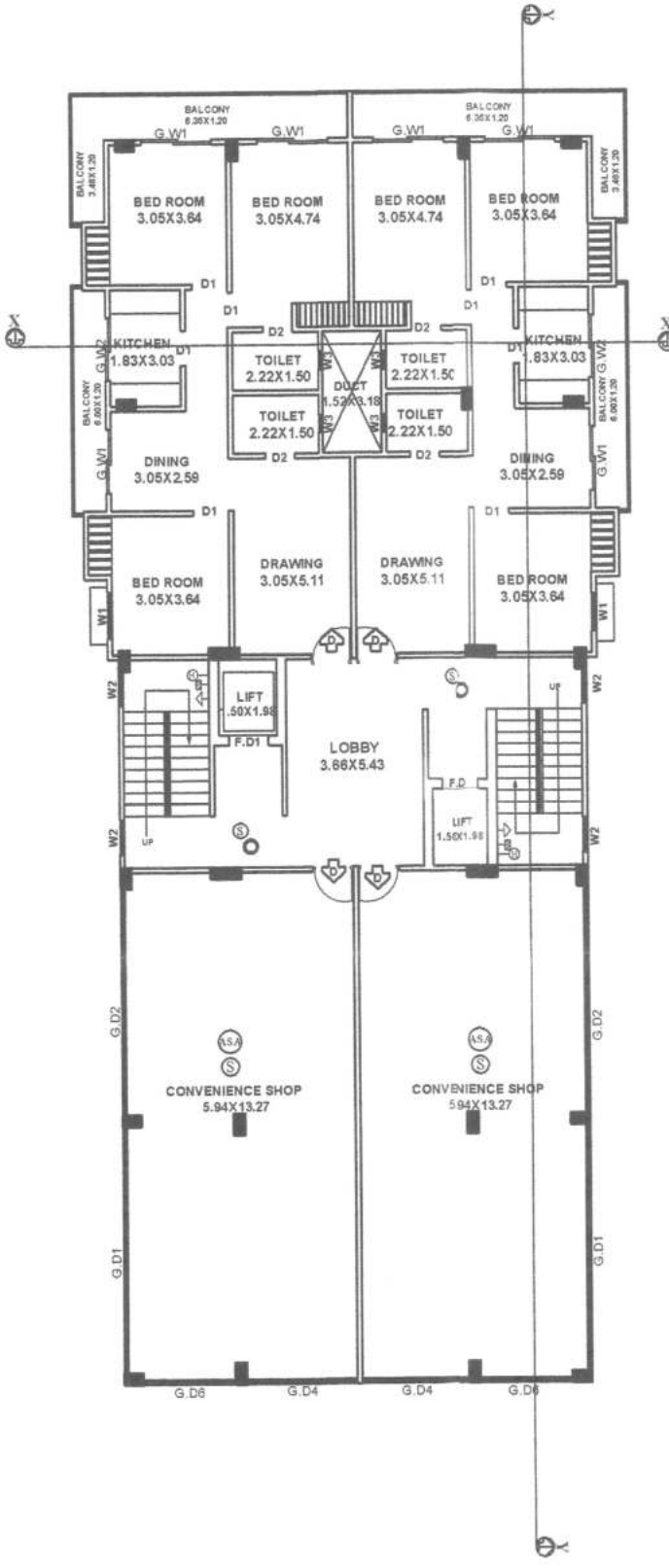


SECTION AT X-X
BLOCK-B

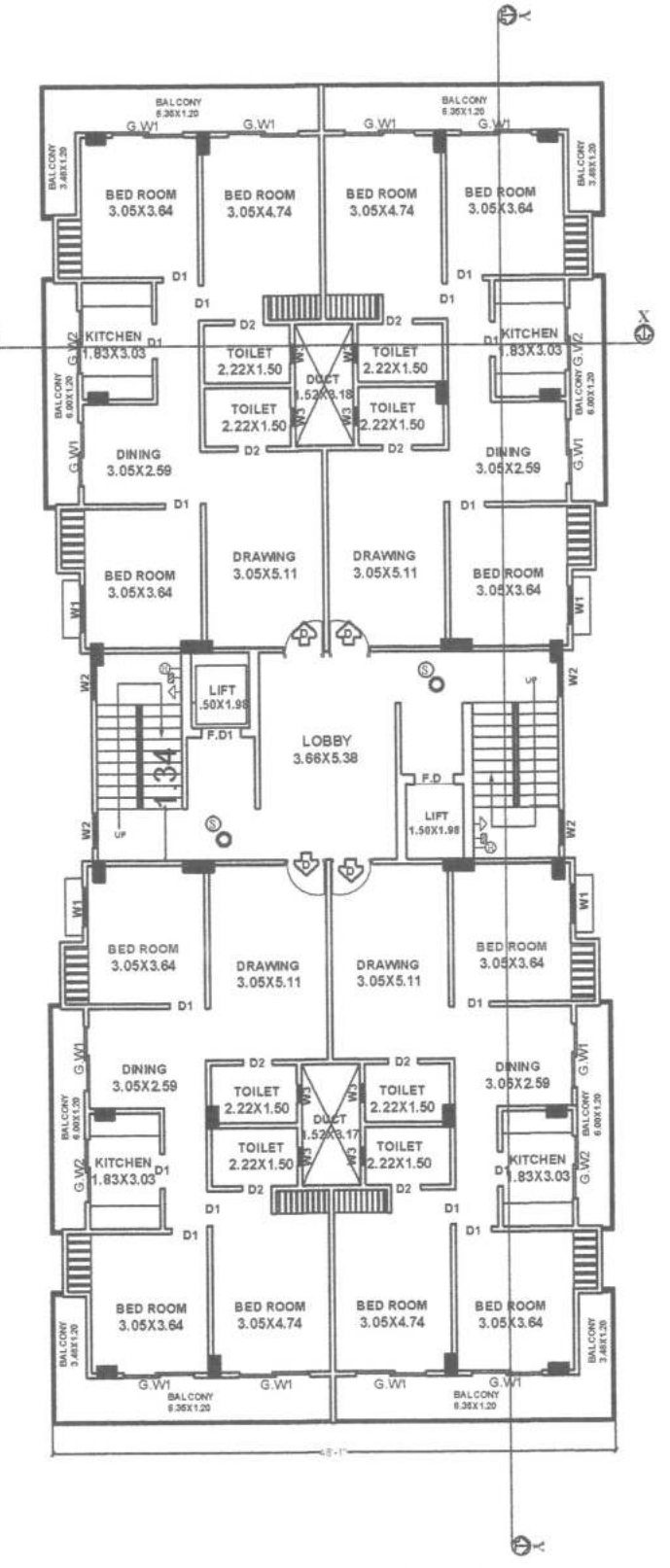


GROUND FLOOR PLAN
BLOCK - A

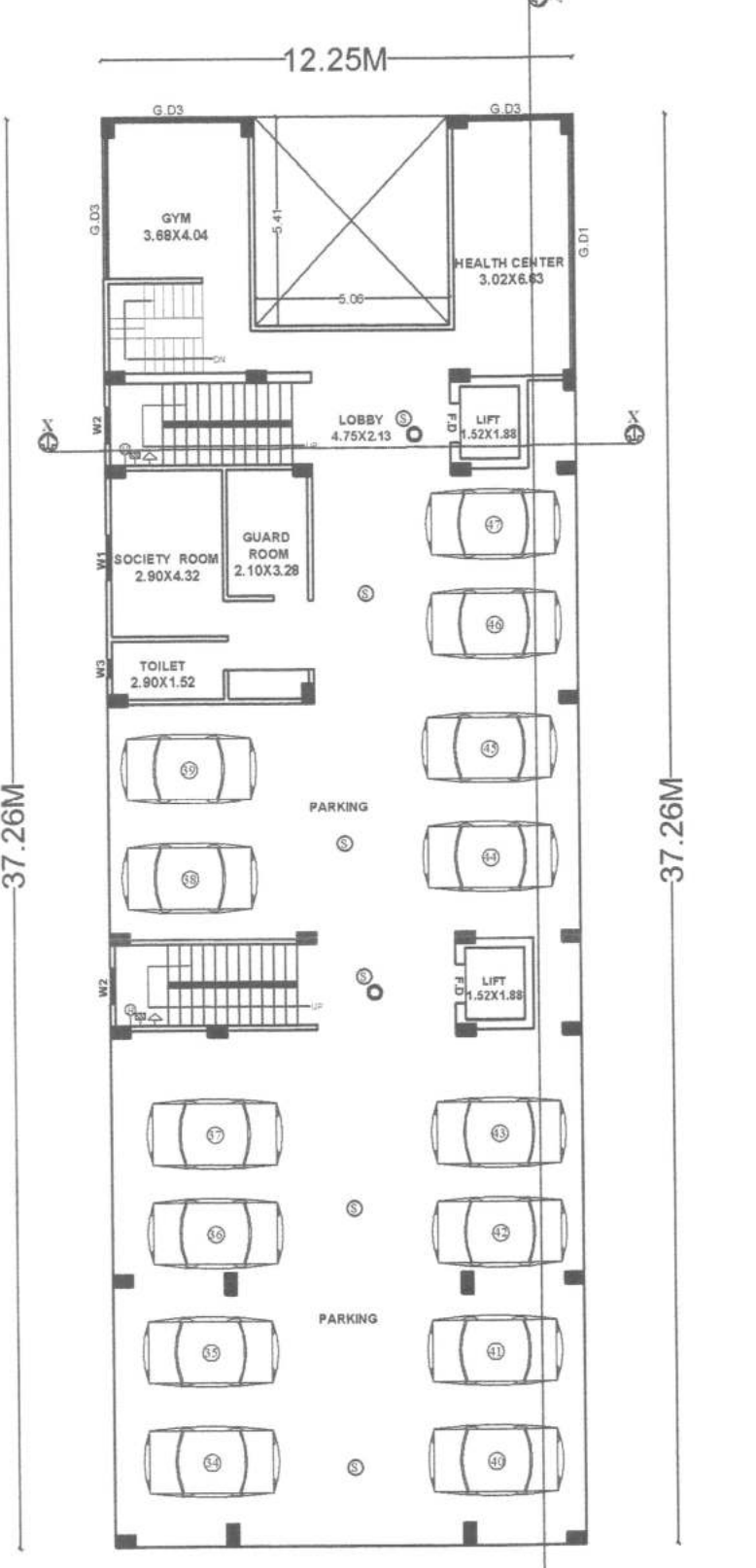
(BLOCK - A)



FIRST FLOOR PLAN
BLOCK - A

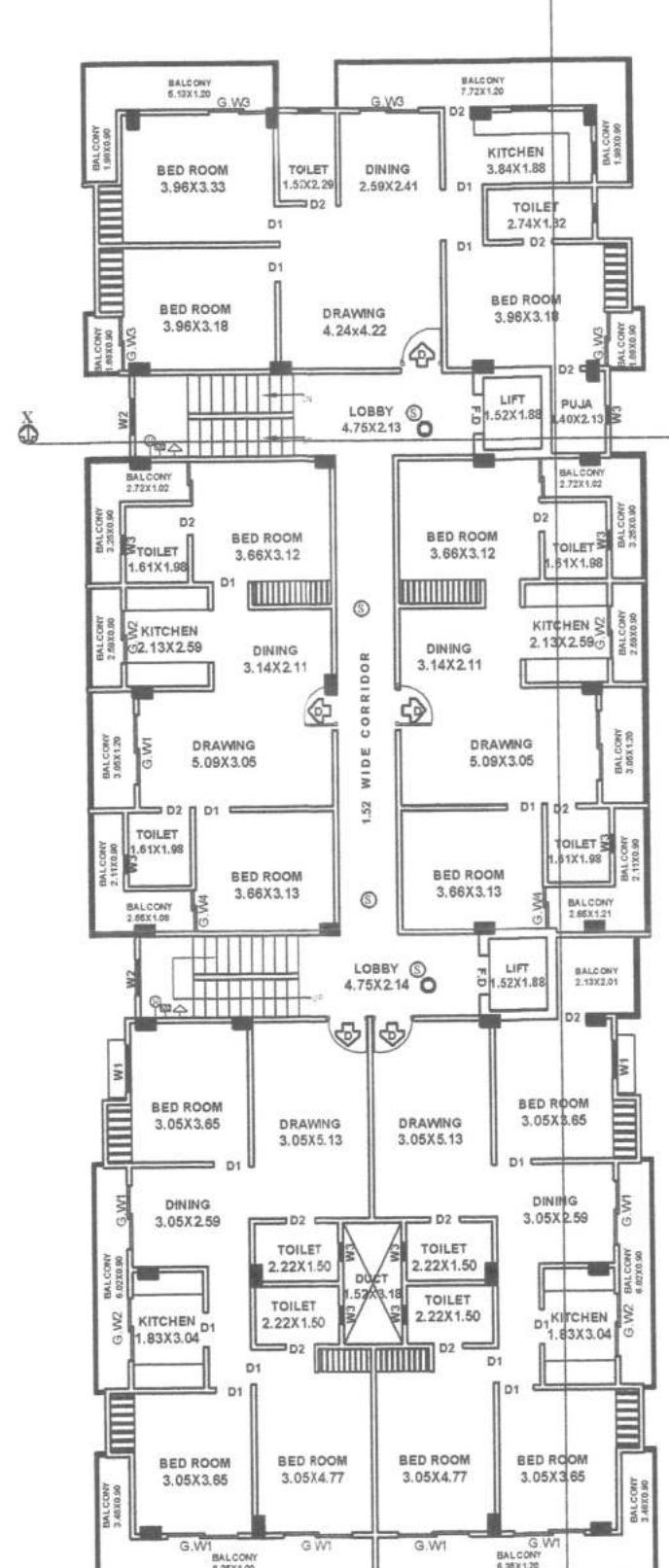


2ND, 3RD & 4TH FLOOR PLAN
BLOCK - A

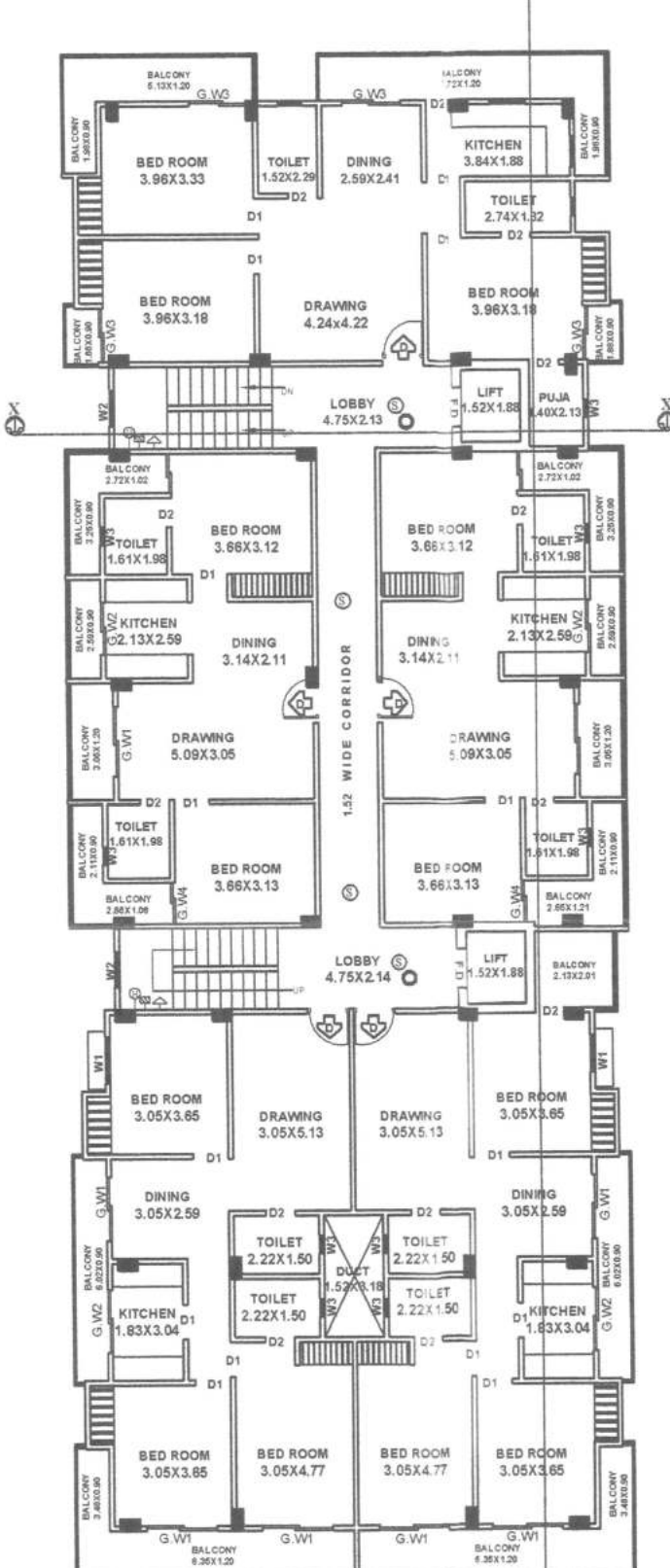


GROUND FLOOR PLAN
BLOCK - B

(BLOCK - B)



FIRST FLOOR PLAN
BLOCK - B



2ND, 3RD & 4TH FLOOR PLAN
BLOCK - B

SPECIFICATION

1. R.C UNDER REEMED PILE FOUNDATION AS PER DETAIL GIVEN IN THIS DRAWING.
2. 1ST CLASS BRICK WORK IN CEMENT MORTAR (1:6) IN SUPER STRUCTURE.
3. HEIGHT OF PLINTH FLOOR AREA SHOWN IN SECTION.
4. 0.03 I.P.S. FLOORING OVER 0.75 DRY REMMED KHOLA.
5. OVER FLAT BRICK SOLING OVER LOCAL SAND FILLING.
6. 0.050 TH D.P.C. ON P.L. ALL ROUND THE BUILDING.
7. 0.110 TH LIME CONCRETE OVER 0.100 TH R.C.C. SLAB.
8. 0.15 TH R.C.C. BAND AT DOORS & WINDOWS OPENINGS.
9. 0.12 CEMENT PLASTER ON BOTH SIDE OF WALL.
10. WHITE & COLOUR WASH AS PER CHOICE.

SCHEDULE OF DOORS & WINDOWS

SL. NO.	TYPE	WIDTH	SILL.	HEIGHT
1.	F.D	1.37	0.00	2.13
2.	F.D1	1.00	0.00	2.13
3.	D	1.07	0.00	2.13
4.	D1	0.90	0.00	2.13
5.	D2	0.76	0.00	2.13
6.	G.D1	6.63	0.00	2.54
7.	G.D2	6.15	0.00	2.54
8.	G.D3	3.23	0.00	2.54
9.	G.D4	2.87	0.00	2.54
10.	G.D5	2.74	0.00	2.54
11.	G.D6	2.39	0.00	2.54
12.	G.D7	2.39	0.00	2.54
13.	G.D8	1.83	0.00	2.54
14.	G.W1	1.83	0.00	2.54
15.	G.W2	1.64	0.00	2.54
16.	W1	1.22	0.90	2.13
17.	W3	0.45	0.90	2.13

PROJECT:-
VINEET JOSHAL SHEELA ENCLAVE

PROPOSED COMMERCIAL CUM (C/S) RESIDENTIAL BUILDING FOR M/S VINEET HOMES PVT. LTD MANAGING DIRECTOR- SMT.PUSHPAM JHA W/O - LATE- CAPT. BINEET KUMAR JHA AT MAUZA- DANAPUR SAHADPUR, SURVEY PLOT NO-1246 (P), KHATA NO- 319, TAUZI NO- 5401, THANA NO- 21, THANA- DANAPUR, DIST- PATNA.

NORTH SCALE SHEET NO-
1:100 02/02
1:200

Er. Ajay Kumar
Structure Engineer
Lic.No-01/STRE/2015/NPDN
SIGN. OF STRUCTURE

For Vineet Homes Pvt. Ltd
Pushpam Jha
Managing Director
Er. Shalish Ranjan
B.Sc.(Engg)/Civil, M.I.E
Emp.No-05/ER/2015/NPDN
NPDN, Danapur
SIGN. OF ARCHITECT

Building Plan No. 76/22-23
18/08/22
A. E.
Magna Parishad Danapur Nizam

विश्व पु-सम्पदा (निविदन और विकास) निष्पत्तियों 2017 (RERA) की शर्तों के अधीन राज् में निर्माण प्रक्रिया के इस परियोजना का निष्पत्त अतिरिक्त भोग

18/08/22
J. E.
Magna Parishad Danapur Nizam

PRODUCED BY AN AUTODESK EDUCATIONAL PRODUCT

PRODUCED BY AN AUTODESK EDUCATIONAL PRODUCT