

RERA registration id.:
RERA Project url.:

SAI
Amrita
ENCLOSURE
Rediscovering luxury!



The elevation and colour scheme is a photographic representation and the actual elevation will be finalized during the course of construction.

Project By "Aastik Buildcon Pvt. Ltd."



Typical Floor Plan (Block - A)



Flat no.	Area (Sq. ft.)	Type
101	1295	3 BHK
102	1295	3 BHK
103	995	2 BHK
104	995	2 BHK
105	1050	2 BHK

Flat no.	Area (Sq. ft.)	Type
106	1295	3 BHK
107	1050	2 BHK
108	1295	3 BHK
109	1295	3 BHK
110	1295	3 BHK





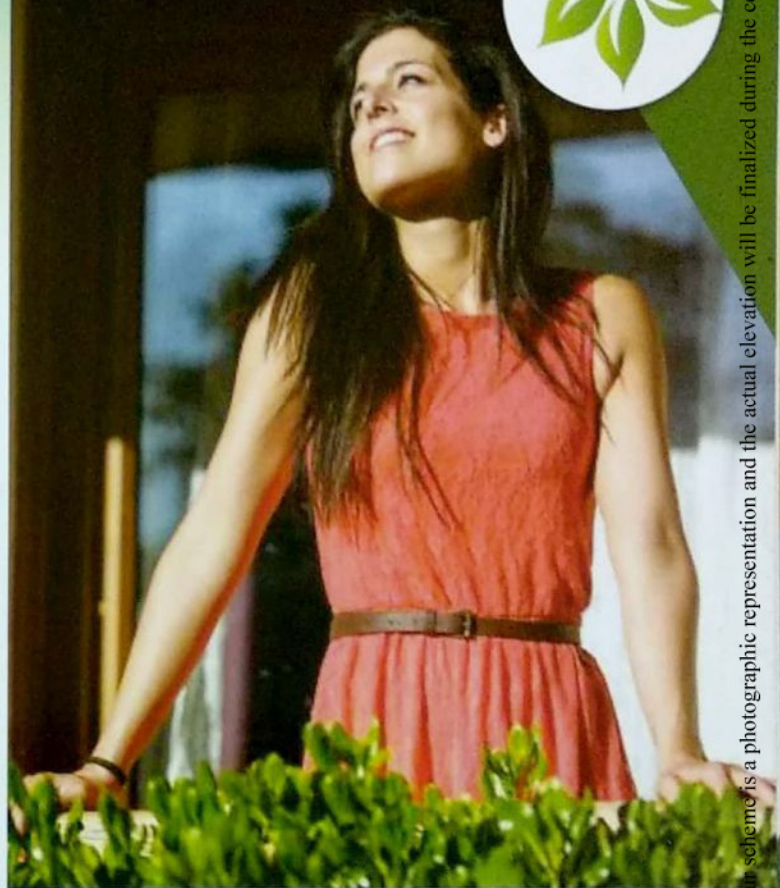
RERA registration id.:
 RERA Project url.:
 The elevation and colour scheme is a photographic representation and the actual elevation will be finalized during the course of construction.



Amenities



RERA registration id.:
RERA Project url.:



*A tempting life
awaits you*

- Landscaped Court with Children's Play Area
- Latest Fire Fighting Equipments
- Joging Track
- 24 x 7 Power Back Up
- Gymnasium
- Round the Clock Security manned by an Advanced Security System
- Club House

The elevation and color scheme is a photographic representation and the actual elevation will be finalized during the course of construction.



Typical Floor Plan (Block - B)



RERA registration id.:
RERA Project url.:

The elevation and colour scheme is a photographic representation and the actual elevation will be finalized during the course of construction.

Specifications



Structure:

Earthquake and fire resistant structure according to latest seismic code, Brick work in cement mortar ratio of 1:6.

Wall Finishes:

Internal - Plaster with POP/ wall putty, **External** - Permanent finish with wall putty and water proof paint.

Flooring:

Vitrified Tiles.

Kitchen:

Ceramic tile flooring, Granite counter with Stainless Steel Bowl, wall tiling up to Dado, Provision for hot and cold water system.

Doors:

Flush doors, Fire proof engineered door wherever required.

Toilets:

Ceramic tile/ Wall Cladding with ceramic Fixtures and CP fittings, CPVC/plumbing, Provision for hot & cold water system.

Windows:

Wooden finish/ Powder coated aluminium windows.

Electrical:

Modular switches, copper electrical wiring throughout in concealed conduit with provision for light points, power- points, TV and Telephone sockets. Power back up per dwelling with the help of silent generator.

Elevator:

Branded (Otis/ Kone/ Johnson) high speed Lift.

Security:

Provision for intercom connected to every flat/ CCTV surveillance in common areas.

PAYMENT SCHEDULE

Type - 1	Flexi Plan
At The Time Of Booking	10%
After Booking Withing 45 Days	30%
On Completion of Ground Floor Slab	10%
On Completion of 1st Floor Slab	10%
On Completion of 2nd Floor Slab	10%
On Completion of 3rd Floor Slab	10%
On Completion of 4th Floor Slab	5%
On Completion of 5th Floor Slab	5%
On Completion of 6th Floor Slab	5%
On Time of Possession	5%

Type - 2	Down Payment Plan
At The Time Of Booking	10%
After Booking Withing 45 Days	85%
On Time of Possession	5%

Car Parking & Other Miscellaneous charges : ₹ 3,50,000

We are providing Loan Facilities from these Banks

*The Bank Group does not take responsibility for the procedural delay in loan sanctionment which is based on the individual capacity of the applicants. Loan sanctionment/ disbursement are at the discretion of the banks.

Disclaimer: As per RERA, the definition of carpet area is the net usable floor area of an apartment, excluding the area covered by the external walls, areas under services shafts, exclusive balcony or verandah area and exclusive open terrace area, but includes the area covered by the internal partition walls of the apartment.

This brochure is an imaginary concept and the plan shown may not be scaled. All plans are subject to accommodate the changes as per the sanctioning authorities. The information given herein is presented as general information about the project. Customers are requested to verify all details from the company sales team.

RERA registration id.:
RERA Project url.:

